

OCTOBER 1, 2023 - SEPTEMBER 30, 2024

ANNUAL REPORT

LAKES AND PINES COMMUNITY ACTION COUNCIL, INC.



SERVING: AITKIN, CARLTON, CHISAGO, ISANTI, KANABEC, MILLE LACS AND PINE COUNTIES

1700 MAPLE AVENUE EAST, MORA MN 55051

(320) 679-1800 / (800) 832-6082

FAX: (320) 679-4139

MONDAY - FRIDAY

6:00 A.M. - 5:30 P.M.

www.lakesandpines.org

***Our Mission is to build prosperous communities by
serving local families and individuals in their
pursuit of self-reliance.***

60 Years Providing Opportunities

An Equal Opportunity Employer/Contractor

Like and follow Lakes and
Pines C.A.C., Inc. on:



LETTER FROM THE LAKES AND PINES BOARD CHAIR



As I near the end of my role as a Lakes and Pines board member, I look back with fond memories of my time. But I also want to go back 60 years in history; in the last 60 years:

- Human space flight took place
- The Beatles took over as the British invasion began on the Ed Sullivan Show
- The Gulf of Tonkin Resolution- 1964, the Vietnam War
- Woodstock in 1969
- Martin Luther King Jr. was assassinated
- John F. Kennedy was elected President and then assassinated
- The Civil Rights movement took place mainly in the 1950s and 1960s

I feel that one thing that has not happened in the past 60 years is an end to poverty. There are people who are living in poverty today the same as 60 years ago. Organizations like Lakes and Pines were just in their infant stages. The need was there but the infrastructure was not in place. As the advent of the Community Action Agencies took shape and gained momentum, there was finally somewhere people could go for help. Not somewhere they would be shunned or demeaned but somewhere they could feel heard, accepted and helped. As these organizations grew, so did their offerings and their ability to help. What a significant change in our culture and the nation. I have been so proud to be part of this life changing organization these past ten years. I have never met a more dedicated group of employees. They care deeply about their customers and go to great lengths to help and guide them with the goal of self-reliance. I would like to shout this from the rooftops but in rural Minnesota, that might not be feasible. I do however feel that getting the news out about Lakes and Pines is still important. I urge community members, former and current customers and any who will listen to tell your friends and neighbors about this great organization and its offerings.

BOARD OF DIRECTORS-EXECUTIVE COMMITTEE



Left to Right:

Ronald Duke, Tim Burkhardt,
Peter Ripka, Bradley Larson,
Roberta Folkestad, Vicki Wunder

Not Pictured:

Travis Leiviska

Board of Directors



PUBLIC SECTOR REPRESENTATIVES

*Travis Leiviska, Aitkin County
Gary Peterson, Carlton County
Dan Dahlberg, Chisago County
Kristi LaRowe, Isanti County
Peter Ripka, Kanabec County
Genny Reynolds, Mille Lacs County
*Stephen Hallan, Pine County

SECTOR TO BE SERVED REPRESENTATIVES

*Kay Pelto-Lund, Aitkin County
*Cj Bird, Carlton County
Gloria Bork, Chisago County
Ronald Duke, Isanti County
Roberta Folkestad, Kanabec County
Vicki Wunder, Pine County
Vacant, Mille Lacs County

PRIVATE SECTOR REPRESENTATIVES

Tim Burkhardt, Senior Services
Beth Crook, Health & Human Services
*Scott TenNapel, Mental Health Services
Bradley Larson, Area Financial Institutions, Chair
Jeffrey Haberkorn, Legal Services
Donald Niemi, Head Start Policy Council
*Brandon Higgins, Family Homeless Prevention & Assistance

*Not Pictured

Head Start Policy Council



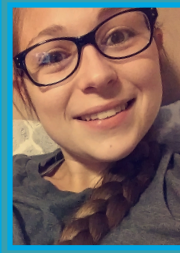
Jennifer Koehler



Jessica Underdahl



Tammy Urwin



Nicole Steadman

Jennifer Koehler, Chairperson - Kanabec County Home-Based Representative

Tammy Urwin, Secretary - Mille Lacs County Home-Based Representative

*Donald Niemi, Board Liaison-Community Representative

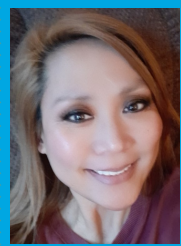
*Tashia Pauley - Mora Center Representative

Nicole Steadman - Princeton Combo Representative

Jessica Underdahl - Chisago Center Representative

**Not pictured*

Family Homeless Prevention and Assistance Program Advisory Committee



Rachel Anderson



Amy Carter



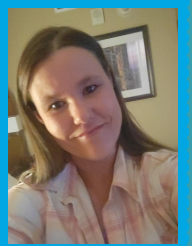
Michele Fournier



Michelle Greuel



Savanna Hall



Amy Walcheski



Pat Leary



Natalie Matthewson



Tammy Moreland



Brianna Nikodym



Tim Poland

Rachel Anderson - Lakes and Pines CAC, Inc.

Amy Carter, RISE

*Jennifer Erdmann, Lakes and Pines CAC, Inc.

*Maggie F., Family Pathways

*Vicki Flor-Behrens, Mille Lacs Band of Ojibwe-Victim Services

Michele Fournier, Family Pathways

*Heather Glem, Mille Lacs County & Veteran Services

Michelle Greuel, Pine County Health & Human Services

*Lori Gudim, Volunteers of America

Savanna Hall, New Pathways

*Heather Iler, Mille Lacs County & Veteran Services

*Angela Korpela, Carlton County Health & Human Services

**Not pictured*

*Mandy Kortus, Family Pathways

Pat Leary, MICH Representative

Cara Lundquist, Northeast Continuum of Care

Natalie Matthewson, Central MN Council on Aging

*Crystal Maxson, Kanabec County Family Services

Tammy Moreland, Mille Lacs Band of Ojibwe

Brianna Nikodym, Kanabec County Family Services

*Mary Peltz, Mission 61

Tim Poland, Central MN Housing Partnership

*Beth Sumner, Mille Lacs County & Veteran Services

Amy Walcheski, RISE

*Julie Wermerskirchen, New Pathways

Legislative Membership

US Senate



Amy Klobuchar

US Senate



Tina Smith

US Congress



Pete Stauber

Governor



Tim Walz

Lieutenant Governor



Peggy Flanagan

Minnesota State Representatives



District 07A
Spencer Igo



District 10A
Ron Kresha



District 10B
Isaac Schultz



District 11A
Jeff Dotseth



District 11B
Nathan Nelson



District 27B
Bryan Lawrence



District 28A
Brian Johnson



District 28B
Anne Neu Brindley



District 31B
Peggy Scott

Minnesota State Senators



District 7
Robert Farnsworth



District 10
Nathan Wesenberg



District 11
Jason Rarick



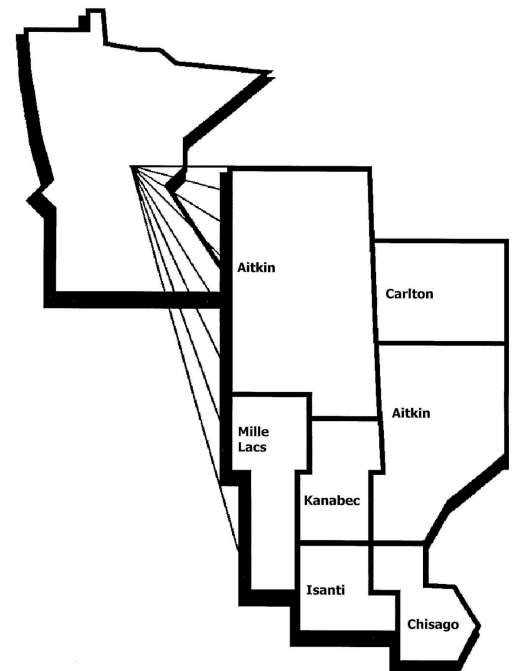
District 27
Andrew Mathews



District 28
Mark Koran



District 31
Calvin Bahr



LAKES AND PINES ADMINISTRATIVE TEAM

Left to Right:

Kelly Manley, Technology Director

Denise Stewart, Executive Director-CCAP

Marcy Batista Paulson, Energy Programs Director

Tina Hamilton, Human Resources Director

Jennifer Erdmann, Community Services Program Director-CCAP

Paige Wimmer, Fiscal Controller

Tammy Arend, Early Childhood & Family Development Director-CCAP

Dawn van Hees, Agency Planner-THRIVE Director-CCAP

Chassidy Lobdell, Administrative Services Director-CCAP

Allan Cekella, Building Sustainability Director



LAKES AND PINES PROGRAMMING



Bridges Rental Assistance Program: Provides housing subsidies for people with mental illness who are experiencing housing instability. The intent is to provide a bridge in rental assistance until another permanent housing subsidy program is available. The Region 7E Area Mental Health Initiative provides resources to maintain and foster the integration of Bridges participants into their communities through partnerships, collaboration and supportive services.

Central Project to End Long-Term Homelessness: Provides supportive services in permanent supportive housing for individuals, unaccompanied youth and families experiencing long-term homelessness.

Child and Adult Care Food Program: Provides well-balanced meals and snacks that meet USDA guidelines for children and families participating in Head Start activities. Serving nutritious meals and snacks contributes to the wellness, healthy growth and development of young children.

Community Services Block Grant/Minnesota Community Action Grant: Provides core funding which establishes Lakes and Pines as a Community Action Agency. These grants fund Agency operations and support program expenses not covered by other grant dollars.

Conservation Improvement Program: Through partnerships with local energy providers, Lakes and Pines can assist homeowners to use electricity and natural gas more efficiently, conserve energy, reduce carbon dioxide emissions and lessen the need for new utility infrastructure. The program may replace high energy consuming household appliances such as refrigerators, washers or even light bulbs.

Early Head Start/Head Start: Lakes and Pines offers a variety of program options to meet the family's needs for early education, family services and health. The program provides weekly home visits to pregnant women and children from birth through age five; programming in partnerships with family and center-based child care providers; combination options through partnerships with local school districts or Head Start centers. The program focuses on enhancing the child's development through parent child focused connections and experiences while working with the whole family to help them be successful. The Head Start program model builds on and strengthens parents' skills in identifying and meeting the needs of their children.

East Central Energy Caring Members: Funded through East Central Energy for customers, Caring Members provides limited assistance to prevent disconnection or to re-connect service if all other resources have been exhausted.

Eastern Regional Housing Navigator: Provides housing navigation and support services to homeless individuals and families that have been referred through the Central Coordinated Entry system.

Emergency and Accessibility Loan Program: Provides homeowners assistance with emergency and accessibility repairs for their home, including ramp installation and bathroom modifications.

LAKES AND PINES PROGRAMMING



Emergency Services Program (Hotel Voucher): Provides short-term hotel stays, along with supportive services to reduce the length of time that individuals and families are homeless.

Emergency Services Program (Street Outreach): Provides street outreach services to individuals and families who are homeless. Services include assistance in accessing shelter, mainstream resources and basic needs items.

Energy Assistance Program: Assists families and individuals with low income in paying a portion of their heating costs and/or preventing a disconnection of their utilities by providing a grant on their behalf to their utility company. This program allows households to stretch their dollars further during the months of high heating costs.

Energy Assistance Crisis Benefit: As an extension of the Energy Assistance Program, this program may further assist individuals and families in avoiding a disconnection or running out of fuel to heat their home.

Energy Related Repairs Program: Assists homeowners who qualify for Energy Assistance and have a faulty, non-functioning or safety hazard within their furnace/boiler system by providing repairs or replacement of failing heating systems.

Family Assets for Independence in Minnesota: A matched savings program helping low-wage earners learn financial fitness skills to build assets through the purchase of a home, purchasing a vehicle, starting a business or pursuit of higher education. Individuals may have savings matched \$3 for each dollar saved.

Family Homeless Prevention and Assistance Program: Provides short-term housing cost assistance and supportive services to households who are homeless or who are at risk of becoming homeless.

Financial Fitness: Interactive sessions for individuals or groups on budgeting, saving, debt-reduction and consumer protection.

Food Support and Health Insurance Outreach and Application Assistance: Builds awareness and helps individuals in applying for health insurance through MNsure and/or food support via the Supplemental Nutrition Assistance Program (SNAP).

Garden Seed Project: This program encourages growing food by distributing free vegetable seeds through area food shelves, extension offices and community gardens.

Housing Rehabilitation Program: This program helps homeowners with rehabilitation improvements to their home including but not limited to roofing, windows and flooring.

Housing Support (formerly GRH): A state-funded program that pays room and board in approved locations for people with low income and low assets who have disabilities or other conditions.

Pathway II Early Learning Scholarships: Awards grants to families through an eligible Four-Star Parent Aware rated program, including Lakes and Pines' Head Start or other local preschool/childcare programs. The scholarships increase access to high-quality early childhood programs for three - and four - year - old children with the highest needs in order to improve school readiness.

LAKES AND PINES PROGRAMMING



Reach Out for Warmth: This program is privately funded through donations that may assist households that have had an uncontrollable situation, such as job loss, accident or medical condition and are facing an energy-related emergency. This program is an important resource for individuals and families who are facing a hardship and do not have access to other benefits.

Small Cities Development Program: Through partnerships with local cities, townships and counties, this program helps homeowners and businesses with building repairs and improvements. This program is currently available in Pine City, Hinckley, Foreston and Pease.

Social Security Application Assistance: Provides assistance to individuals who have a long-term disability which prevents them from working, who are homeless or at risk of homelessness and who are receiving state assistance in applying for Social Security.

Supplemental Nutrition Assistance Program (SNAP) Employment & Training Program: Provides coaching for individuals receiving SNAP who are ready to pursue a more rewarding employment future.

THRIVE: Transforming, Honoring and Respecting Independence by Valuing Empowerment. THRIVE is a service model and Lakes and Pines staff are trained in the Family Centered Coaching Mindset. No matter where a customer enters the agency, they will experience the THRIVE model.

Transitional Housing Program: Provides transitional housing and supportive services to individuals and families who are homeless.

Volunteer Income Tax Assistance: Free tax preparation for low-to-moderate income individuals and families by dedicated and skilled volunteers. Assistance with a limited number of property tax and renter's refund forms is also available.

Weatherization: This program helps homeowners reduce their energy costs by providing energy-saving improvements to their home such as insulation, caulking and weather stripping. According to a national evaluation of the program, households save an average of \$283 or more annually due to weatherization improvements and upgrades.

We Rally Around Parents (WRAP): During the fiscal year WRAP services were provided to Aitkin, Chisago and Pine county families with children up to the age of five years. Dedicated resource coaches provide support to families by connecting them with community resources; fostering positive supports; building parenting, coping, self-care and self-regulation skills; navigating application processes; creating goals and plans to reach those goals and creating family-centered plans to address the mental health and social-emotional needs of the family.

Youth Transitional Housing Program: Provides transitional housing and supportive services to youth ages 16-24.



The Promise of Community Action

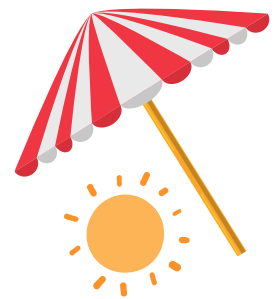
Community Action changes people's lives, embodies the spirit of hope, improves communities, and makes America a better place to live. We care about the entire community, and we are dedicated to helping people help themselves and each other.



The Community Action vision remains clear—we believe in a nation that creates opportunities for all people to thrive, builds strong, resilient communities, and ensures a more equitable society. From the beginning, Community Action has held the radical assumptions that all people should have the opportunity to thrive and should be treated with dignity and respect, and that structural race, gender and other inequities are barriers that must be eliminated. Today, as Community Action celebrates its 60th anniversary, we continue to believe in this vision and work to advance opportunities by improving access to resources that create fair and favorable conditions for individuals to develop their own capabilities, achieve well being and reach their full potential.

Community picnic 2024

On Saturday, September 14, 2024, Lakes and Pines held its first Annual Community Picnic at our main office in Mora, Kanabec County, with a spectacular turnout of approximately 450 community members. Local businesses and organizations also participated, including the Mora Fire Department, Timber Trails, New Pathways, Kanabec Public Health, Nystrom & Associates, Neighborhood National Bank, Recovering Hope, Region 7E Adult Mental Health Initiative and various Lakes and Pines departments. The picnic featured free food, games for both kids and adults with fun prizes to be won, face painting, door prizes, a silent auction and entertainment provided by Reti 2 DJ. The Lakes and Pines Board of Directors and staff are excited for next year's picnic and hope to welcome even more of the community to join in the festivities!



Seeds to Grow On



With rising food prices, more people are experiencing the satisfaction of growing their own food. The area now has more community gardens than ever before. The Agency's Garden Seed Program provides free vegetable seeds, which are distributed by 22 community partners, primarily area food shelves, along with a few Extension offices and community gardens. This program reaches over 700 households every year.

The primary goal of the program is to build awareness that SNAP funds can be used to purchase vegetable seeds and plants. A secondary goal is to help individuals and families learn about gardening, grow some of their own food, and free up money for other needs.

Low-income individuals and families were invited to choose the seeds they wanted to grow. This year, available seeds included beets, bush beans, carrots, sweet corn, cucumbers, lettuce, peas, summer squash, radishes and spinach. Unfortunately, pumpkin, winter squash and watermelon seeds were backordered so the order was canceled as they weren't available when the other seeds were ready to be delivered to distribution sites.

One of the distribution sites, the Carlton County Extension office, partnered with their Master Gardeners to run a gardening camp for children at a local library. They used seeds from the Garden Seed Program, and each child received their own garden space. Each week, the children weeded, watered and measured their plants. The camp's curriculum included a science component, a visit from a beekeeper who discussed the importance of pollinators and a healthy snack featuring some ingredients from the garden. The staff shared that they are ready and willing to participate in the program again next year.



Stability and Growth



When this remarkable family first enrolled at the Head Start Cloquet Center, they had just moved up north from southern Minnesota and were struggling to make ends meet on one income with four children.

Their eldest daughter started at the center in 2021 and completed half a year before the family moved back to southern Minnesota. In 2022, they returned north, and their daughters enrolled in Head Start. Since then, both girls have graduated from the program and are now thriving as kindergarten and first-grade students. Their boys are currently enrolled in our Head Start Center program and will continue for several more years.

Thanks to the support, childcare and resources provided by Lakes and Pines, the parents have grown and achieved self-sufficiency goals for both themselves and their children. Recently, they have been consistent in maintaining food security, providing new experiences for their children, rewarding them when deserved, paying their bills and reducing their debts.

THRIVE Turns ONE!

Transforming, Honoring and Respecting Independence through Valuing Empowerment

Over the past year, Lakes and Pines has seen significant changes in the implementation of THRIVE, a service model practiced throughout the organization. Two major shifts include the adoption of a unified data system for most Lakes and Pines programming and the breakdown of internal Agency silos.

In August 2023, the Early Childhood Department—which includes the Early Head Start and Head Start programs—transitioned to the Community Services Department’s database, EmpowOR. Although the move had its challenges, the Lakes and Pines team is committed to making this integration successful. As a result, families are being served more holistically. Staff can now see when customers are enrolled in multiple programs and help facilitate social and economic progress by identifying and addressing gaps. This new practice has proven to be highly beneficial.

The second significant change involves breaking down departmental silos and fostering greater collaboration. Lakes and Pines departments are now working more efficiently together to accomplish shared goals. Agency directors are coordinating more closely, and staff are collaborating across programs to ensure that all of a household’s needs are addressed. For example, when a household working with the housing team has young children, they are encouraged to explore Head Start. Similarly, households receiving tax assistance may also be connected to Energy Assistance services when applicable.

At its core, THRIVE represents the culture of Lakes and Pines. The Whole Family Approach serves as the framework, with family-based coaching as a key tool used by all staff. This past year has been one of growth and excitement, and as the Agency enters year two, even more exciting developments are on the horizon. Stay tuned!





THRIVE: A SUCCESS STORY OF RESILIENCE AND EMPOWERMENT

Transforming, Honoring and Respecting Independence by Valuing Empowerment

In early spring of 2022, the Lakes and Pines Board of Directors and Administrative team met with consultant Renae Shields to explore ways to improve the agency's service delivery for customers. By providing intensive, one-on-one coaching, customers can build resilience skills that will help them stabilize after the crisis. While life may bring new challenges, customers who develop these skills are able to recover more quickly and with less support. This approach builds confidence, helping people handle future crises with greater independence.

With this vision in mind, Lakes and Pines developed a new service model. In April 2023, THRIVE was launched; THRIVE stands for Transforming, Honoring, and Respecting Independence by Valuing Empowerment. THRIVE is built on the principles of Family-Centered Coaching and the Whole Family Approach, aimed at helping customers strengthen their ability to manage life's challenges.

One year later, the success of this approach was demonstrated through the success story of "Sally." Sally first came to Lakes and Pines seeking help through one of our housing programs. She was paired with a coach, and together they worked to stabilize her housing situation. For a time, Sally and her child were stable. But recently, she found herself without housing, a job, or food, and returned to Lakes and Pines for help.

However, this time was different. The confidence Sally had gained from her previous success with her coach allowed her to take charge of her situation. She knew what steps to take, had a plan in place and simply needed her coach's help completing some forms. Within three weeks, Sally had secured housing, found a job and ensured there was food on the table for her family.

Sally's journey is a perfect example of the resilience cycle Lakes and Pines set out to build through THRIVE. In-depth coaching empowers customers, boosts self-esteem and helps them recognize the skills they already possess. With continuous coaching until a level of success is achieved, customers can meet future challenges with less assistance, ultimately breaking the cycle of dependence on external support.





A Home Weatherization Project



This one-story home, built in 1986 near Harris, MN, spans 1,936 square feet. During a recent audit, several issues were identified: incorrect dryer venting, a water heater in need of replacement, poor bath fan venting in the attic, leaks in the basement sill area and insufficient attic insulation. The initial blower door leakage rate was measured at 1,410 CFM (Cubic Feet Per Minute; a measurement of how fast air is moving) at 50 PA (Pascals; a measurement of the difference of air pressure).

A contractor was hired and the water heater was replaced with a high-efficiency, power-vented unit. Shortly after, the weatherization crew began their work, ensuring the homeowner felt comfortable with each step of the process. They sealed attic infiltrations, upgraded outdated lighting to energy-efficient LED fixtures, insulated the water heater piping, added foil faced foam board to the basement sill, increased the attic's R-value to R-60, air-sealed the common wall between the conditioned space and the garage, and re-vented both the dryer and bathroom fan. Additionally, smoke and carbon monoxide detectors were installed for enhanced safety.

These improvements not only addressed health and safety concerns but also significantly reduced the home's energy loss, with the blower door leakage rate dropping to 1,156 CFM at 50 PA after the work was completed.



BEFORE



AFTER



BEFORE



AFTER

LAKES AND PINES EXPANDS STREET OUTREACH SERVICES

Lakes and Pines was recently awarded funding from the Department of Human Services' Office of Economic Opportunity (OEO) to enhance its resources for homeless individuals, families and youth across our service area. With this support, Lakes and Pines has expanded its outreach efforts, bringing critical services directly to the streets.

This expansion is essential in our region, where there are only four homeless shelters: an adult shelter in Pine County, a family shelter in Isanti County and domestic violence shelters in Mille Lacs and Chisago Counties. Through our new Street Outreach program, Lakes and Pines staff can improve access to basic needs, community resources and emergency shelter vouchers for those experiencing homelessness, significantly increasing response times.

Our Street Outreach Workers are actively increasing their presence throughout the service area, building new partnerships and strengthening existing ones to better identify and assist individuals experiencing homelessness. They carry outreach bags containing essentials such as hygiene items, snacks, resource information, socks, towels and other supplies necessary for health and safety. These bags are distributed to individuals they encounter at food shelves, libraries, parks and other community locations.

Homelessness is a complex issue that no single person or agency can resolve alone. That's why Lakes and Pines collaborates with various community service organizations, businesses, foundations and individual supporters. These partnerships help connect our Street Outreach Workers with individuals and families sleeping outside or in places not meant for human habitation. When no shelter is available, the program has provided tents, tarps, backpacks and other survival items to those in need. Through ongoing community collaboration and outreach efforts, Lakes and Pines is committed to addressing rural homelessness and related challenges. The need for additional emergency shelters, warming centers, day centers and outreach hubs is increasingly clear to residents and community partners alike. In the coming year, fostering discussions around these critical needs will be a central focus of our Street Outreach activities.





Energy Assistance Program

Prioritizing Your Safety and Well Being

At Lakes and Pines, our Energy Assistance Program is designed to ensure your safety and comfort. Lakes and Pines offers a range of support for eligible families and individuals across our seven county service area (Aitkin, Carlton, Chisago, Isanti, Kanabec, Mille Lacs and Pine). Homeowners can take advantage of the Energy Repair and Replacement Program, which ensures that heating systems remain safe and functional. Additionally, the Energy Assistance Crisis Benefit is available to prevent heating disruptions during Minnesota's cold winters.

An Energy Assistance Thank You

“Dear Lakes and Pines, thank you for everything you have done for me! Everyone there I talked to was so kind and understanding. Without your support, I would have died from the freezing cold. The staff at Lakes and Pines went above and beyond helping me. Mentally, they put my mind at ease. I can’t thank you enough, bless all of you at Lakes and Pines for all you do!”

Exciting Development of Early Childhood Center

In 2023, our Lakes and Pines Early Childhood and Family Development Department embarked on an exciting journey to open an Early Head Start Center in Mora at Lakes and Pines’ main office location for toddlers aged 16 months to three (3) years. The first step involved dividing the Early Childhood Office into two parts: one remained office space, while the other was transformed into a classroom. By late fall and early winter, this phase was completed, including plumbing, new walls, flooring and paint.

Step two began with planning for a new playground space. Significant changes were required to create a safe play area for our new students, including reconfiguring part of the parking lot. While these projects were underway, our dedicated teachers worked hard to ensure the classroom was fully equipped and ready for the children.

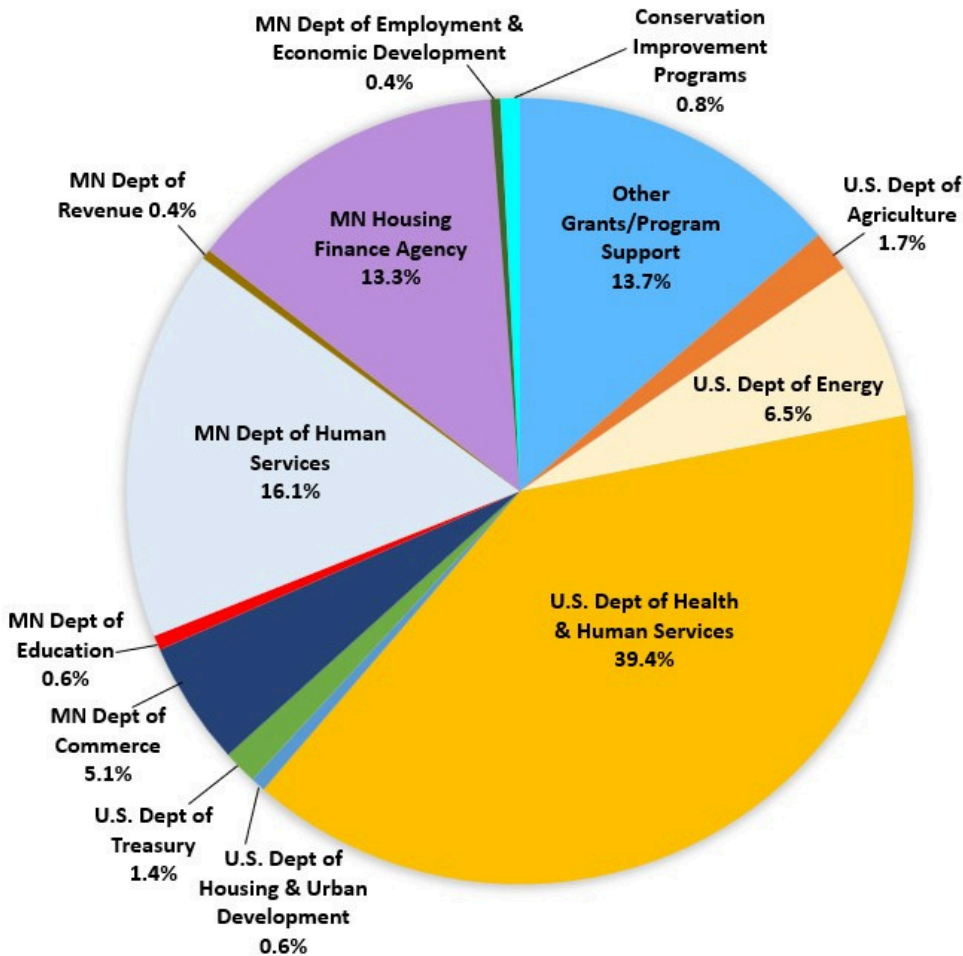
Staff expect the playground to be finished by the beginning of November 2024, and once it passes licensing approval, classes can officially begin! Each step brings us closer to fulfilling our mission of serving families, and Lakes and Pines considers this a major achievement. This success would not have been possible without the support and efforts of many staff members and community partners.



Financial Statement

October 1, 2023 - September 30, 2024

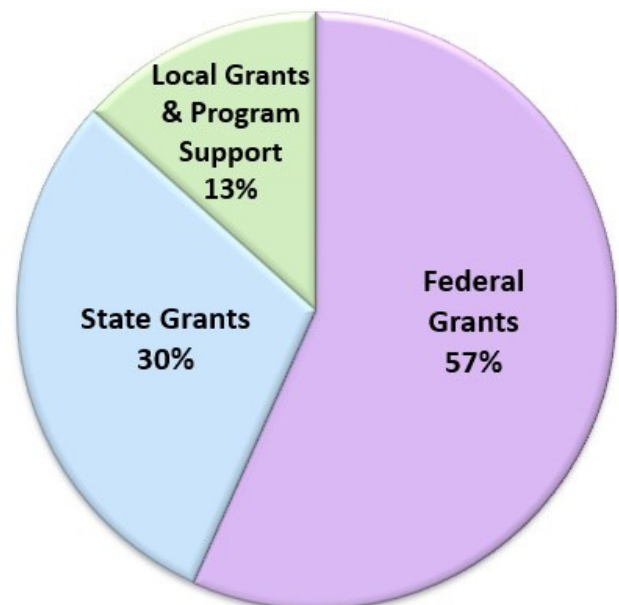
Funding Sources



Funding Sources	
U.S. Department of Agriculture	\$218,331
U.S. Department of Energy	\$819,259
U.S. Department of Health and Human Services	\$4,956,058
U.S. Department of Housing and Urban Development	\$74,906
U.S. Department of Treasury	\$171,594
Minnesota Department of Commerce	\$634,757
Minnesota Department of Education	\$79,114
Minnesota Department of Human Services	\$2,018,388
Minnesota Department of Revenue	\$47,959
Minnesota Housing Finance Agency	\$1,673,211
MN Dept. of Employment and Economic Development	\$49,035
Conservation Improvement Programs	\$94,697
Other Grants/Program Support	\$1,724,933
Total	\$12,562,242

Funding Type

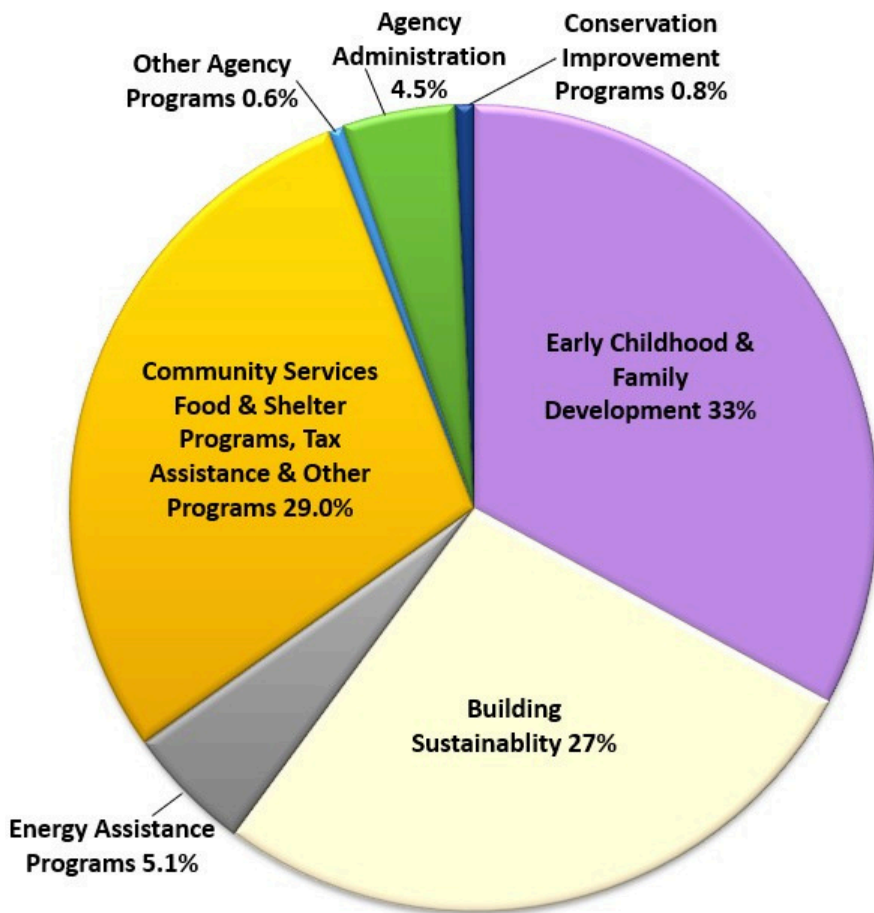
Funding Type	
Federal Grants	\$7,123,557
State Grants	\$3,759,720
Local Grants & Program Support	\$1,678,965
Total Funding Type	\$12,562,242



Financial Statement Cont.

October 1, 2023 - September 30, 2024

Expenses by Function

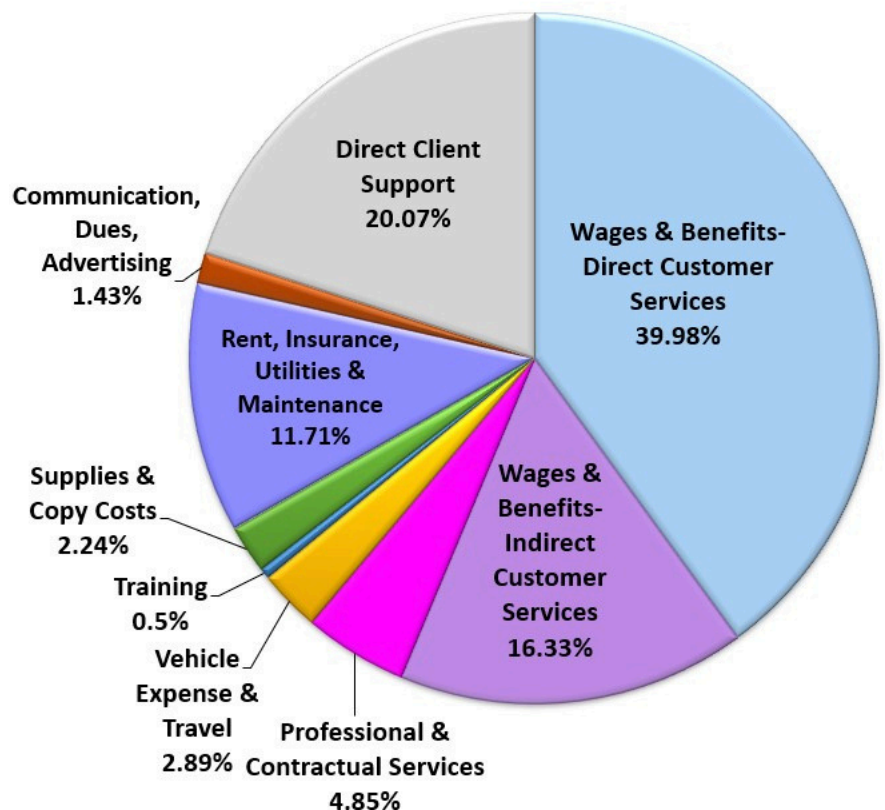


Expenses by Function

Function	Amount
Early Childhood & Family Development	\$4,139,336
Building Sustainability	\$3,412,178
Energy Assistance Programs	\$634,757
Community Services Food & Shelter Programs, Tax Assistance & Other Programs	\$3,640,880
Other Agency Programs	\$75,699
Agency Administration	\$564,695
Conservation Improvement Programs	\$94,697
Total Expenses by Function	\$12,562,242

Expenses by Category	
Wages & Benefits - Direct Customer Services	\$5,022,307
Wages & Benefits - Indirect Customer Services	\$2,051,365
Professional & Contractual Services	\$608,760
Vehicle Expense & Travel	\$363,205
Training	\$64,254
Supplies & Copy Costs	\$280,904
Rent, Insurance, Utilities & Maintenance	\$1,471,275
Communication, Dues, Advertising	\$179,166
Direct Customer Support	\$2,521,006
Total Expenses by Category	\$12,562,242

Expenses by Category





Funding Agencies and Programs



Minnesota Department of Commerce: Weatherization; Propane Assistance

Minnesota Department of Education: State Head Start; Pathway II Early Learning Scholarships

Minnesota Department of Employment & Economic Development: Small Cities Development Programs; Pine County Housing Rehabilitation

Minnesota Department of Human Services: Minnesota Community Action Grant; Aitkin County Family Resource Specialist; Emergency Services Program; Housing Support (Group Residential Housing); Homeless Youth Act; MNsure Application Assistance Program; Transitional Housing Program; Supplemental Nutrition Assistance Program (SNAP) State Outreach; Social Security Advocacy Services; Family Assets for Independence in Minnesota (FAIM)

Minnesota Department of Revenue: Tax Assistance Grant; Tax Outreach Grant

Minnesota Housing Finance Agency: Rehabilitation Loan Programs; Family Homeless Prevention and Assistance Program (FHPAP); Bridges Rental Assistance Program

U.S. Department of Agriculture: Child and Adult Care Food Program; Supplemental Nutrition Assistance Program Outreach and Employment and Training Programs

U.S. Department of Energy: Department of Energy, Weatherization

U.S. Department of Health & Human Services: Community Services Block Grant (CSBG); CSBG Discretionary; Early Head Start; Federal Head Start; Energy Assistance Program/Energy Crisis/Energy Related Repairs; Senior Respite Services (Title III)

U.S. Department of Housing & Urban Development: Eastern Region Coordinated Entry Housing Navigator

U.S. Department of Treasury: Volunteer Income Tax Assistance Program

Other Grants/Program Support

Central Minnesota Council on Aging: Senior Respite

Deluxe Foundation: THRIVE

Hearth Connection: Central Long-term Housing

Initiative Foundation: WIPFLI Compensation Analysis Project

Local Energy Providers: Conservation Improvement Program

Mille Lacs Corporate Ventures: Long-term Homelessness Supportive Services

Otter Bremer Trust: THRIVE and Family Centered Coaching

Region 7E-Adult Mental Health Initiative: Regional Housing Coordinator; Financial Fitness Workshops

Whole Family Community of Practice: THRIVE; 2024 Annual Convention Staff Registration

Private Donations: Emergency Services; Power Action Leadership; Reach Out for Warmth; East Central Energy (ECE) Caring Members